

Shop Talk



East Boldre Community Stores

Issue 5 - December 2022

Please Support Our Planning Application

The chapel offers a perfect space for a sustainable, vibrant shop and the old Sunday school room provides a flexible community space. After 6 weeks our application has finally been registered. The proposal:

- Get change of use from a church to a shop
- Demolish the hall and create off-road parking
- Install solar PV panels to halve electricity costs
- French windows in the Sunday school room to improve natural light.

We'd be very grateful if you would submit your comments in support of our application to the National Park Authority to show potential funders that we have strong community backing. Use the QR code below or go to planning.agileapplications.co.uk/nfnpa (search for 22/00825 and sign in to comment). Many thanks, the EBCS team.



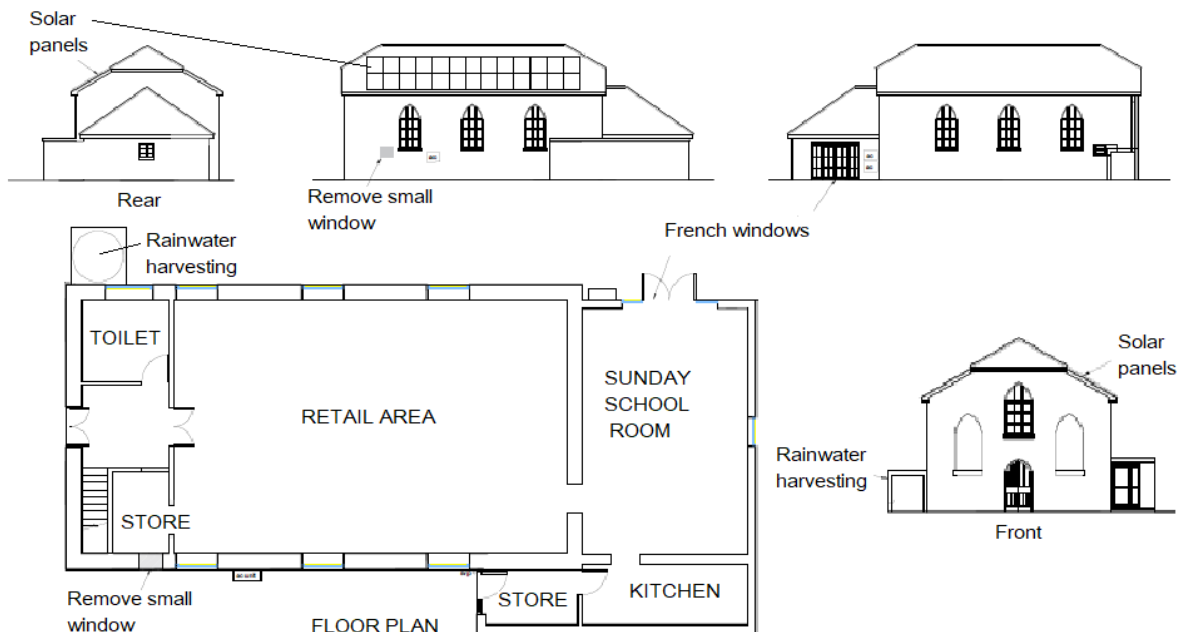
Christmas Meeting

Saturday 17th December,
10:30am

East Boldre Village Hall

Everyone is welcome to join us for coffee, mulled wine and mince pies.

Find out more about our plans for the shop and the chapel. We'll be very happy to answer questions and to discuss ideas.



It's All About You

We'd love to hear your views via our new survey so we can be sure our plans for the shop and Baptist chapel align with community needs and priorities.

It takes less than 10 minutes to complete and will be important in supporting our funding applications.

Please use the link on our website homepage (below) or this QR code to access.

There are paper copies at the shop and pub if you'd prefer.

Many thanks



Purchase of the Chapel

The Baptist Union Corporation have confirmed that our offer is at an acceptable level subject to contract and us raising the necessary funds to buy it. We'd like to thank Michael Donaldson for his expert professional advice and efforts on our behalf in negotiations with the vendor.

Five different parties originally submitted offers - two were from locals who have since withdrawn their offers so as not to compete with us. Their support is very much appreciated.

It will take time to raise the funds so that we can exchange contracts and legally secure the building. There is a chance that the chapel could be sold to someone else in the meantime. With no alternative locations for the shop, this is a risk we have to take.

Fundraising - £19,000 raised so far

Project Development - £9,000

We have now raised these funds needed to develop the project (architect, survey, valuations, planning, and the costs of preparing for our share offer).

We are very grateful for the recent support from East Boldre Parish Council who awarded £2,500, Cllr Keith Mans for £500 and the Booster programme - £6,000.

Capital and Revenue Funding - £671,000

Government's Community Ownership Fund (COF) - £299,500

Part of the government's Levelling Up programme, this fund helps communities purchase local properties that are important to them. Following a very positive response to the 'Expression of Interest', we have now submitted our full application. Fingers crossed we repeat our previous success.

Our Community Share Offer - £200,000

The share offer provides the majority of the match funding required to release the COF award. We are aiming to launch the share offer in January. This is the mechanism by which locals become the owners of the business and have an equal say in key business decision regardless of shareholding.

Other Grants - £171,500

Beaulieu Beaufort Foundation very kindly awarded £10,000 towards the chapel purchase. We are through the first round of the LoCASE funding process, we are applying £10,000. We have had a panel interview as the second stage in applying for a £17,000 New Forest District Council Community Grant.

We need your help to make the Shop happen

We'd love to hear from you if you could help with any of the following:

Communications

- Posting news on our Facebook group and making sure we answer questions
- Website
- Press releases
- Our newsletter

Celebrating the Chapel's Heritage

We are planning a permanent exhibition celebrating the chapel's heritage in the old 'Sunday school room'. This flexible space will be used for shop events and workshops so a wide range of locals and visitors will have the opportunity to learn about the chapel's past.

We would love to hear from you if:

- You have memories and/or photos of the chapel as we plan to collate these into part of the exhibit.
- You would be keen to get involved in investigating the chapel's history - the site, its role in community life and its people.

To get in touch email Judith judith@19jlr.co.uk or call her on 07773 284 211



Anna Rostand



Mike Hawker



Judith Richardson



Nick Thompson



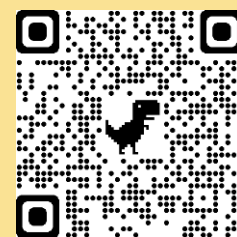
Alison Moore-Gwyn



David Moore-Gwyn



Rebecca Gabzdyl



Visit our website
for more info